

CERVICAL SCREENING PATHWAY QUICK REFERENCE GUIDE



ROUTINE CERVICAL SCREENING (AGES 25-69*)

MORE INFORMATION:

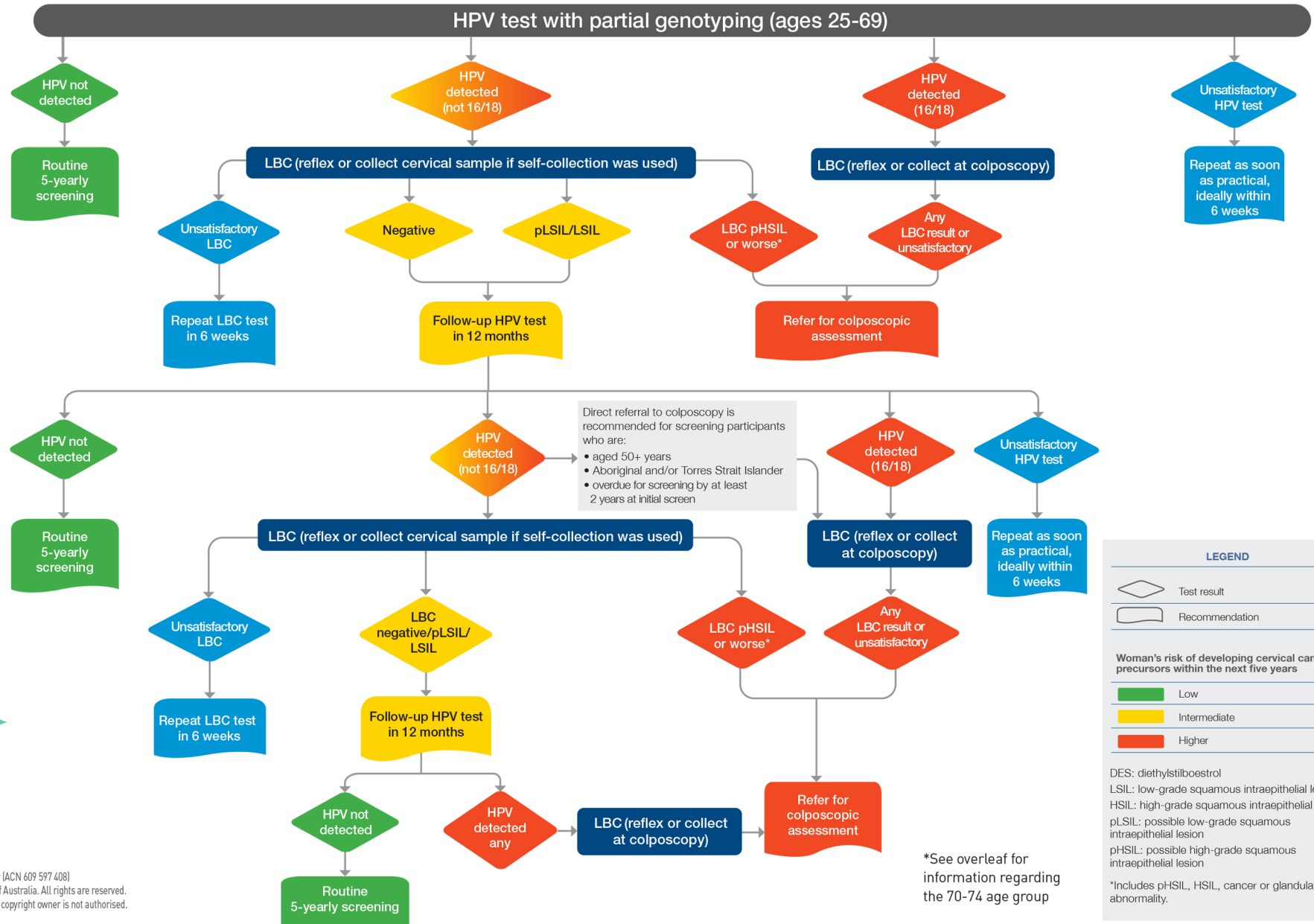
For queries about clinical guidelines and management of patients please contact the VCS Pathology's Clinical Advisory Service.

Tel: (03) 9250 0309

The clinical guidelines are available via the Cancer Council Australia website <https://cancer.org.au/clinical-guidelines/cervical-cancer/cervical-cancer-screening>



Scan to access the guidelines



Flowchart adapted from National Cervical Screening Program Guidelines, Cancer Council Australia



www.acpcc.org.au

Copyright Notice © 2024, Australian Centre for the Prevention of Cervical Cancer (ACN 609 597 408)
These materials are subject to copyright and are protected by the Copyright Laws of Australia. All rights are reserved.
Any copying or distribution of these materials without the written permission of the copyright owner is not authorised.

LEGEND

◇ Test result
▭ Recommendation

Woman's risk of developing cervical cancer precursors within the next five years

Low
Intermediate
Higher

DES: diethylstilboestrol
LSIL: low-grade squamous intraepithelial lesion
HSIL: high-grade squamous intraepithelial lesion
pLSIL: possible low-grade squamous intraepithelial lesion
pHSIL: possible high-grade squamous intraepithelial lesion

*Includes pHSIL, HSIL, cancer or glandular abnormality.

*See overleaf for information regarding the 70-74 age group

CERVICAL SCREENING PATHWAY QUICK REFERENCE GUIDE



NATIONAL
CERVICAL SCREENING
PROGRAM
A joint Australian, State and Territory Government Program



CERVICAL SCREENING: EVERY 5 YEARS AGES 25 - 74

All people with a cervix should **begin screening at 25.**

Those who have had a screening test between the ages of **70-74** where no HPV was detected **can exit the program.**

Individuals 75+ who have not had a test in the last five years can **request a test.**

CERVICAL SCREENING: SUPPORTS CHOICE

All routine Cervical Screening Test (CST) participants have the option to screen using either a **self-collected** vaginal sample or a **clinician-collected** cervical sample.

HPV SELF-COLLECTION

Self-collection is as sensitive as clinician-collected cervical samples for the detection of CIN2+/AIS and HPV^{1,2}. It is suitable for all routine screening participants, including:

- Those who are pregnant
- Those with immune deficiency

A visual guide to self-collection for participants is available in 22 languages at: www.acpcc.org.au/practitioners/clinical-resources/

If HPV (not 16/18) is detected on a self-collected sample for a routine CST, participants need to return for a clinician-collected cervical sample for cytology to inform further management.

RESULTS FOR CERVICAL SCREENING TESTS

>90%
will have no HPV detected

~6%
will have HPV (not 16/18) detected

~2%
will have HPV 16/18 detected³

1. Arbyn et al, Detecting cervical precancer and reaching underscreened women by using HPV testing on self samples: updated meta-analyses BMJ 2018; 363 :k4823
2. Saville et al, Analytical performance of HPV assays on vaginal self-collected vs practitioner-collected cervical samples: the SCoPE study, Journal of Clinical Virology [2020], doi: <https://doi.org/10.1016/j.jcv.2020.104375>
3. Brotherton et al, Age-specific HPV prevalence among 116,052 women in Australia's renewed cervical screening program: A new tool for monitoring vaccine impact: Vaccine [2019], DOI: 10.1016/j.vaccine.2018.11.075

RESULTS MANAGEMENT

Refer to the Cervical Screening Pathway flowchart overleaf.

IMPORTANT: Referral to **colposcopy** is recommended for the following if HPV (any type) is detected **at 12 months after** an initial positive test:

- Participants 50+ years
- Aboriginal and/or Torres Strait Islander participants
- Participants overdue for screening by at least two years at initial screen

Referral to **colposcopy** is also recommended for anyone **70+ years** of age in whom HPV (**any type**) is detected.

UNSATISFACTORY RESULTS

Management of unsatisfactory (invalid) test results:

- Unsatisfactory HPV test - repeat as soon as practical, ideally within 6 weeks.
- Unsatisfactory cytology - repeat in 6 weeks' time.

Unsatisfactory results are rare but can occasionally occur from inadequate cell collection or contamination (e.g. presence of lubricant or topical creams).

CO-TESTING

Patients with symptoms suggestive of cervical cancer should undergo diagnostic cytology and HPV testing (co-testing) and appropriate referral. This includes:

- Postcoital bleeding, unexplained intermenstrual bleeding, or any post-menopausal bleeding
- Unexplained persistent unusual vaginal discharge

Other indications for a co-test include:

- Participants undergoing Test of Cure* surveillance after treatment of high-grade squamous intraepithelial lesion (HSIL), including those who were treated with hysterectomy
- Participants who have been treated for adenocarcinoma-in-situ (AIS)
- Participants who have been exposed to diethylstilboestrol (DES) in utero

Self-collection cannot be used for those who require a co-test.

* Guideline changes in 2024/25 are expected to change Test of Cure surveillance from a co-test to an HPV test, meaning that HPV self-collection will be an option for these patients. Please check the National Cervical Screening Program Guidelines on the Cancer Council Australia website for up-to-date information.